

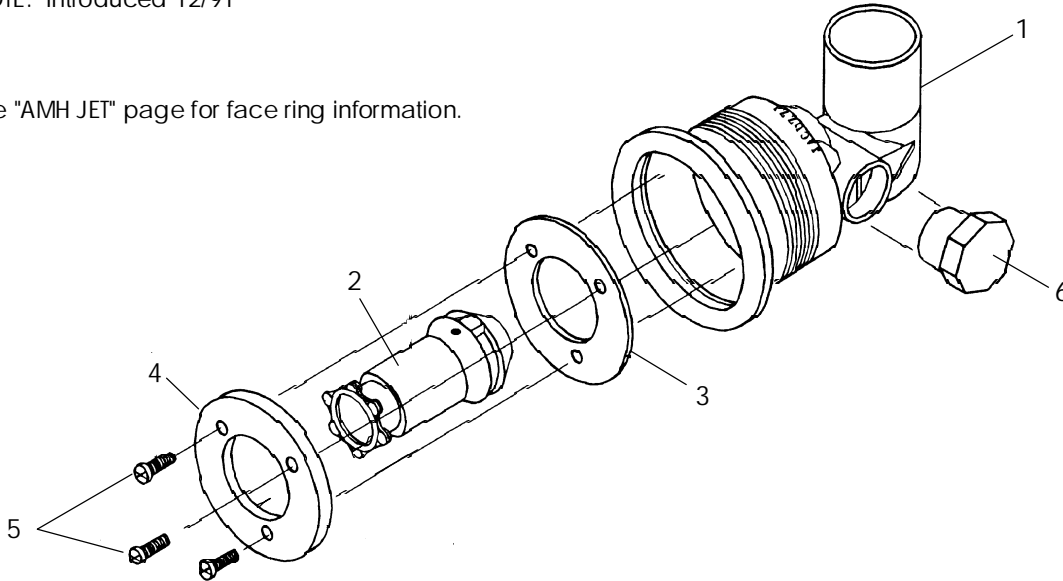


BATHS

HTC JET

NOTE: Introduced 12/91

See "AMH JET" page for face ring information.



ITEM	P/N	DESCRIPTION	QTY
1	A320914	Body, HTC, Almond	1
1	A320917	Body, HTC, Black	1
1	A320940	Body, HTC, White	1
1	A320945	Body, HTC, Silver	1
1	A320949	Body, HTC, Rose	1
1	A320951	Body, HTC, Shell	1
1	A320953	Body, HTC, Gray	1
1	A320962	Body, HTC, Dusty Orchid	1
1	A320969	Body, HTC, Oyster	1
2	B786914	Swivel Assy, HTC, Almond	1
2	B786917	Swivel Assy, HTC, Black	1
2	B786940	Swivel Assy, HTC, White	1
2	B786945	Swivel Assy, HTC, Silver	1
2	B786949	Swivel Assy, HTC, Rose	1
2	B786951	Swivel Assy, HTC, Shell	1
2	B786953	Swivel Assy, HTC, Gray	1
2	B786962	Swivel Assy, HTC, Dusty Orchid	1
2	B786969	Swivel Assy, HTC, Oyster	1
3	1840000	Gasket, Clamping Ring	1
4	B788914	Clamping Ring, HTC w/Logo Almond	1
4	B788917	Clamping Ring, HTC w/Logo Black	1
4	B788940	Clamping Ring, HTC w/Logo White	1
4	B788945	Clamping Ring, HTC w/Logo Silver	1
4	B788949	Clamping Ring, HTC w/Logo Rose	1
4	B788951	Clamping Ring, HTC w/Logo Shell	1
4	B788953	Clamping Ring, HTC w/Logo Gray	1
4	B788962	Clamping Ring, HTC w/Logo Dusty Orchid	1
4	B788969	Clamping Ring, HTC w/Logo Oyster	1
5	9356000	Screw, Thread Forming, PHP #6-19 x .50"L.	3
6	B777000	Plug, 1/2" SPIG	1
N.S.	1836000	Back Up Ring, AMH	1
N.S.	1835000	Lock-Nut, AMH	1
N.S.	C279000	Air Line Adapter	1

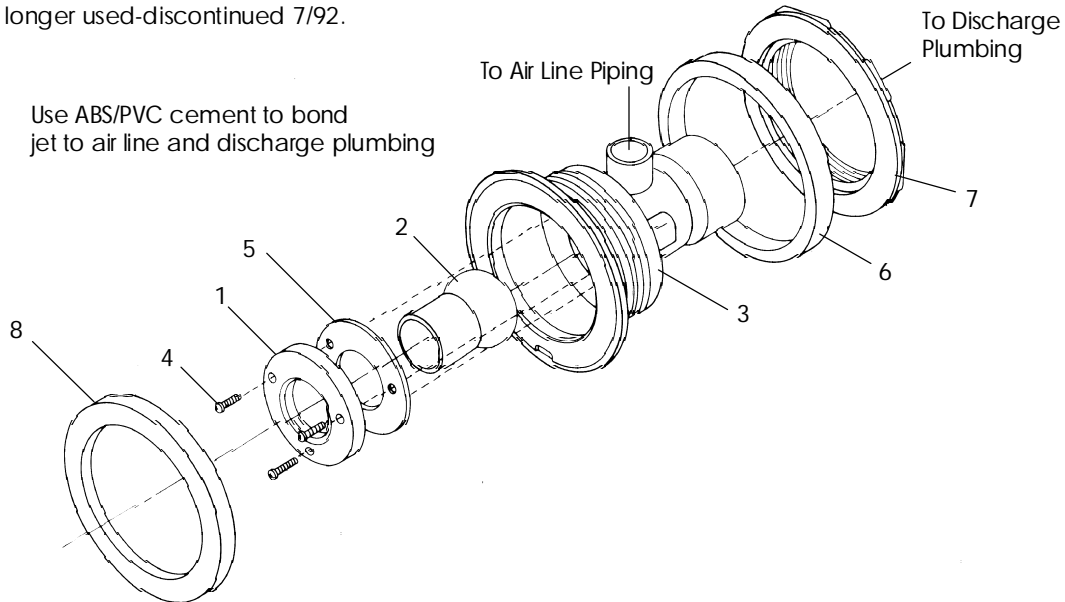
N.S. = Not Shown



BATHS

AMH JET

NOTE: No longer used-discontinued 7/92.

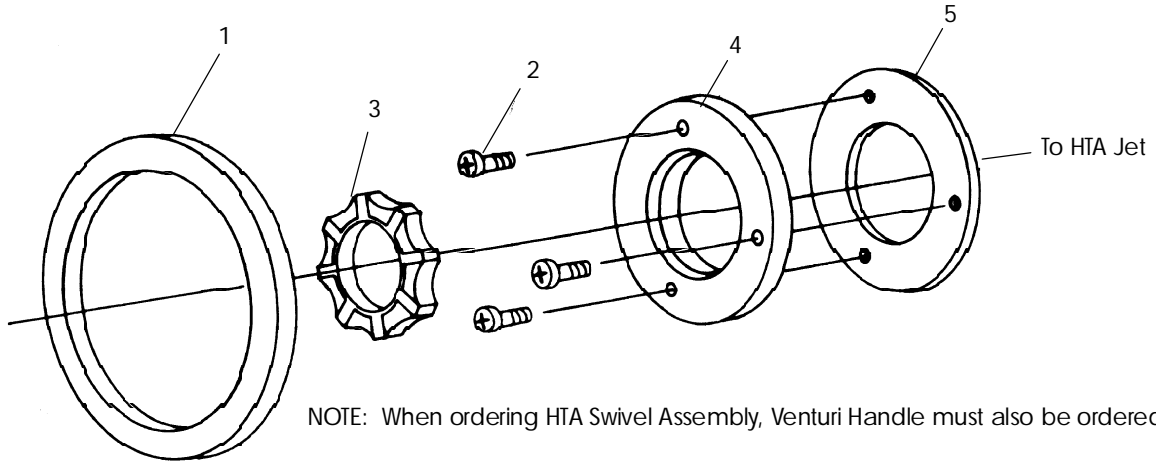


ITEM	P/N	DESCRIPTION	QTY
1	4558914	Ring, Clamping-Almond-AMH/Logo	1
1	4558917	Ring, Clamping-Black-AMH/Logo	1
1	4558922	Ring, Clamping-Cinnabar-AMH/Logo	1
1	4558940	Ring, Clamping-White-AMH/Logo	1
1	4558945	Ring, Clamping-Silver-AMH/Logo	1
1	4558949	Ring, Clamping-Rose-AMH/Logo	1
1	4558951	Ring, Clamping-Shell-AMH/Logo	1
1	4558953	Ring, Clamping-Gray-AMH/Logo	1
1	4558962	Ring, Clamping-Dusty Orchid-AMH/Logo	1
2	1834914	Nozzle, AMH-Almond	1
2	1834917	Nozzle, AMH-Black	1
2	1834922	Nozzle, AMH-Cinnabar	1
2	1834940	Nozzle, AMH-White	1
2	1834945	Nozzle, AMH-Silver	1
2	1834949	Nozzle, AMH-Rose	1
2	1834951	Nozzle, AMH-Shell	1
2	1834953	Nozzle, AMH-Gray	1
2	1834962	Nozzle, AMH-Dusty Orchid	1
3	1833914	Body, AMH-Almond	1
3	1833917	Body, AMH-Black	1
3	1833922	Body, AMH-Cinnabar	1
3	1833940	Body, AMH-White	1
3	1833945	Body, AMH-Silver	1
3	1833949	Body, AMH-Rose	1
3	1833951	Body, AMH-Shell	1
3	1833953	Body, AMH-Gray	1
3	1833962	Body, AMH-Dusty Orchid	1
4	3967000	Screw, PHPM #8-32 x .50"L.	3
5	1840000	Gasket, Clamping Ring, AMH	1
6	1836000	Ring, Back-Up	1
7	1835000	Nut, AMH	1
8	1838848	Face Ring, AMH, Chrome	1
8	1838829	Face Ring, AMH, Bright Brass	1
8	1838828	Face Ring, AMH, Gold	1



BATHS

HTA JET TRIM



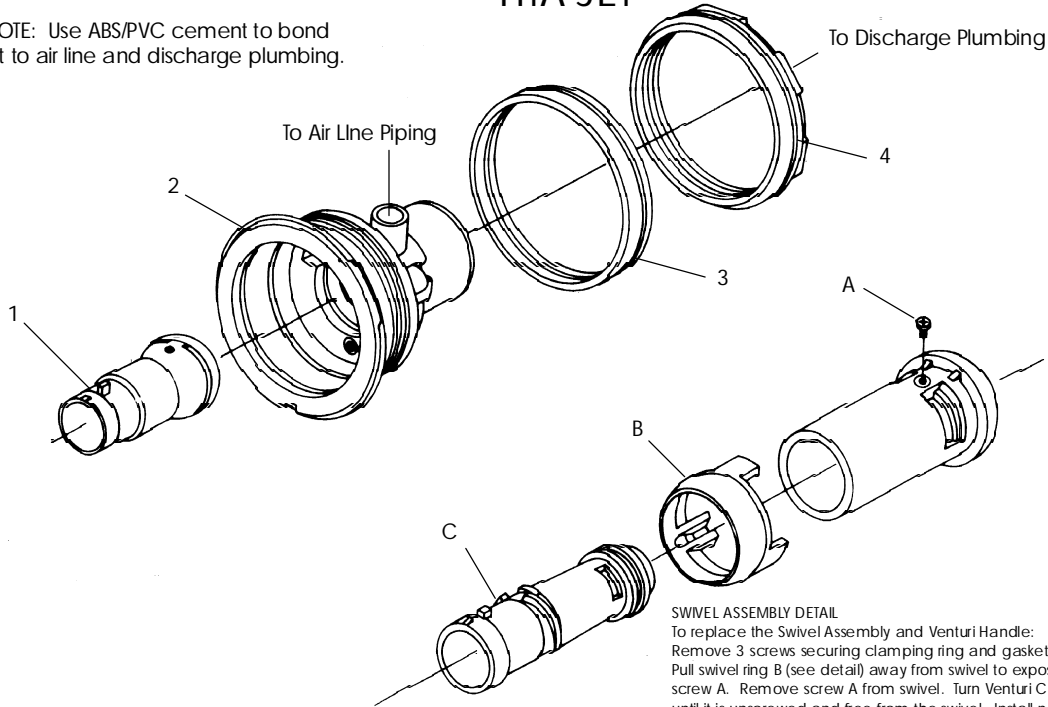
ITEM	P/N	DESCRIPTION	QTY
1	4120827	Face Ring, HTA Chrome	1
1	4120828	Face Ring, HTA Gold	1
1	4120829	Face Ring, HTA Bright Brass	1
2	3967000	Screw, PPHM #8-32 x .50"L.	3
2	4043828	Screw, PPHM #8-32 x .50"L., Gold	3
2	4043829	Screw, PPHM #8-32 x .50"L., Bright Brass	3
3	3641827	Venturi Handle, Chrome	1
3	3641828	Venturi Handle, Gold	1
3	3641829	Venturi Handle, Bright Brass	1
3	7277904	Venturi Handle, Tan	1
3	7277914	Venturi Handle, Almond	1
3	7277917	Venturi Handle, Black	1
3	7277922	Venturi Handle, Cinnabar	1
3	7277924	Venturi Handle, Blue	1
3	7277940	Venturi Handle, White	1
3	7277945	Venturi Handle, Silver	1
3	7277949	Venturi Handle, Rose	1
3	7277951	Venturi Handle, Shell	1
3	7277952	Venturi Handle, Raspberry	1
3	7277953	Venturi Handle, Gray	1
3	7277956	Venturi Handle, Pink	1
3	7277962	Venturi Handle, Dusty Orchid	1
3	7277969	Venturi Handle, Oyster	1
4	7758904	Clamping Ring, HTA, Tan	1
4	7758914	Clamping Ring, HTA, Almond	1
4	7758917	Clamping Ring, HTA, Black	1
4	7758922	Clamping Ring, HTA, Cinnabar	1
4	7758924	Clamping Ring, HTA, Blue	1
4	7758940	Clamping Ring, HTA, White	1
4	7758945	Clamping Ring, HTA, Silver	1
4	7758949	Clamping Ring, HTA, Rose	1
4	7758951	Clamping Ring, HTA, Shell	1
4	7758952	Clamping Ring, HTA, Raspberry	1
4	7758953	Clamping Ring, HTA, Gray	1
4	7758956	Clamping Ring, HTA, Pink	1
4	7758962	Clamping Ring, HTA, Dusty Orchid	1
4	7758969	Clamping Ring, HTA, Oyster	1
5	1928000	Gasket, Clamping Ring, HTA	1



BATHS

HTA JET

NOTE: Use ABS/PVC cement to bond jet to air line and discharge plumbing.



SWIVEL ASSEMBLY DETAIL

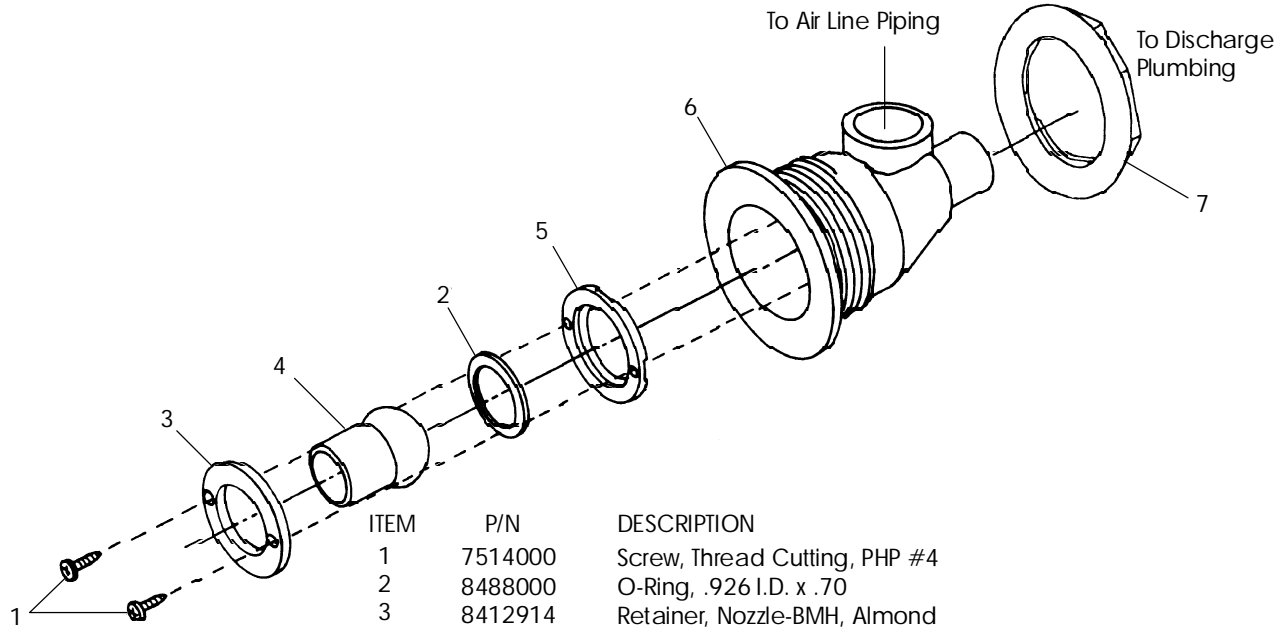
To replace the Swivel Assembly and Venturi Handle:
 Remove 3 screws securing clamping ring and gasket from jet body.
 Pull swivel ring B (see detail) away from swivel to expose retaining screw A. Remove screw A from swivel. Turn Venturi C counterclockwise until it is unscrewed and free from the swivel. Install new swivel assembly, securing it with clamping ring, gasket and 3 screws. Screws are properly tightened when the swivel assembly can still be manually moved from side to side, but tight enough to allow the Venturi handle to be turned to adjust water without turning the swivel. To install the handle, align the two portions of the swivel assembly with the notches on the handle and snap it on.
 NOTE: When installed, the handle is permanently in place; attempting to remove it will damage the snap-on feature of the handle.

ITEM	P/N	DESCRIPTION	QTY
1	4881904	Swivel Assy, HTA, Tan	1
1	4881914	Swivel Assy, HTA, Almond	1
1	4881917	Swivel Assy, HTA, Black	1
1	4881922	Swivel Assy, HTA, Cinnabar	1
1	4881924	Swivel Assy, HTA, Blue	1
1	4881940	Swivel Assy, HTA, White	1
1	4881945	Swivel Assy, HTA, Silver	1
1	4881949	Swivel Assy, HTA, Rose	1
1	4881951	Swivel Assy, HTA, Shell	1
1	4881952	Swivel Assy, HTA, Raspberry	1
1	4881953	Swivel Assy, HTA, Gray	1
1	4881956	Swivel Assy, HTA, Pink	1
1	4881962	Swivel Assy, HTA, Dusty Orchid	1
1	4881969	Swivel Assy, HTA, Oyster	1
2	1644904	Body, HTA Jet, Tan	1
2	1644914	Body, HTA Jet, Almond	1
2	1644917	Body, HTA Jet, Black	1
2	1644922	Body, HTA Jet, Cinnabar	1
2	1644924	Body, HTA Jet, Blue	1
2	1644940	Body, HTA Jet, White	1
2	1644945	Body, HTA Jet, Silver	1
2	1644949	Body, HTA Jet, Rose	1
2	1644951	Body, HTA Jet, Shell	1
2	1644952	Body, HTA Jet, Raspberry	1
2	1644953	Body, HTA Jet, Gray	1
2	1644956	Body, HTA Jet, Pink	1
2	1644962	Body, HTA Jet, Dusty Orchid	1
2	1644969	Body, HTA Jet, Oyster	1
3	1925000	Back-Up Ring, HTA Inlet	1
4	1645000	Nut, HTA Inlet	1



BATHS

BMH JET



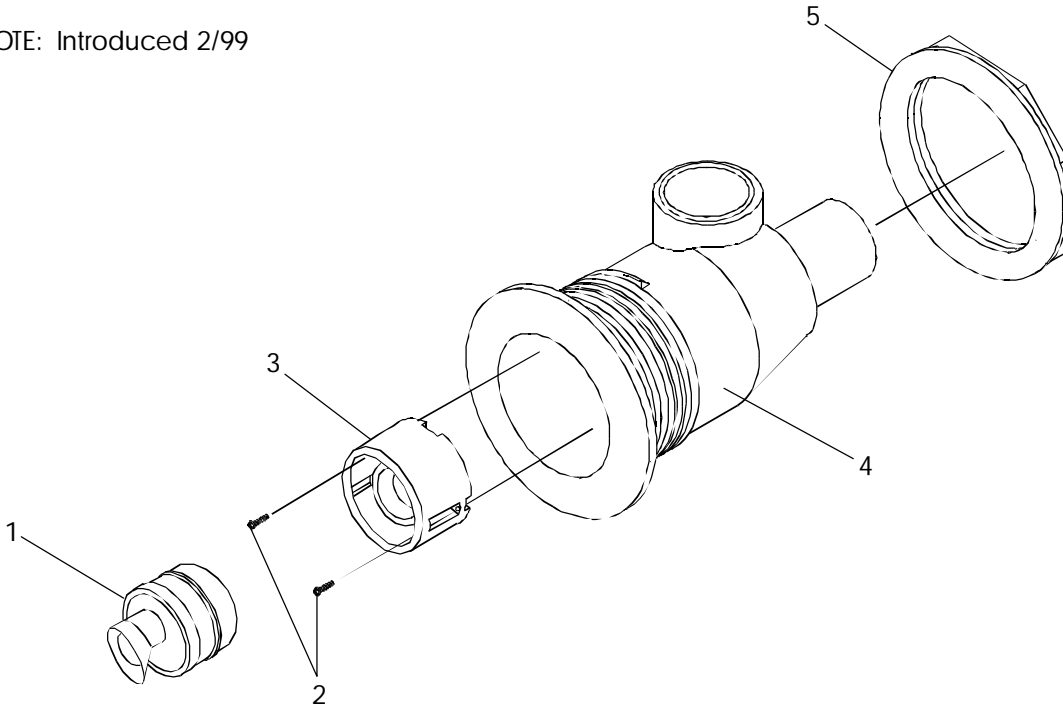
ITEM	P/N	DESCRIPTION	QTY
1	7514000	Screw, Thread Cutting, PHP #4	2
2	8488000	O-Ring, .926 I.D. x .70	1
3	8412914	Retainer, Nozzle-BMH, Almond	1
3	8412917	Retainer, Nozzle-BMH, Black	1
3	8412940	Retainer, Nozzle-BMH, White	1
3	8412945	Retainer, Nozzle-BMH, Silver	1
3	8412949	Retainer, Nozzle-BMH, Rose	1
3	8412951	Retainer, Nozzle-BMH, Shell	1
3	8412962	Retainer, Nozzle-BMH, Dusty Orchid	1
3	8412969	Retainer, Nozzle-BMH, Oyster	1
4	8413914	Nozzle, BMH, Almond	1
4	8413917	Nozzle, BMH, Black	1
4	8413940	Nozzle, BMH, White	1
4	8413945	Nozzle, BMH, Silver	1
4	8413949	Nozzle, BMH, Rose	1
4	8413951	Nozzle, BMH, Shell	1
4	8413962	Nozzle, BMH, Dusty Orchid	1
4	8413969	Nozzle, BMH, Oyster	1
5	8487914	Internal O-Ring Seat, Almond	1
5	8487917	Internal O-Ring Seat, Black	1
5	8487940	Internal O-Ring Seat, White	1
5	8487945	Internal O-Ring Seat, Silver	1
5	8487949	Internal O-Ring Seat, Rose	1
5	8487951	Internal O-Ring Seat, Shell	1
5	8487962	Internal O-Ring Seat, Dusty Orchid	1
5	8487969	Internal O-Ring Seat, Oyster	1
6	8411914	Body, BMH, Almond	1
6	8411917	Body, BMH, Black	1
6	8411940	Body, BMH, White	1
6	8411945	Body, BMH, Silver	1
6	8411949	Body, BMH, Rose	1
6	8411951	Body, BMH, Shell	1
6	8411962	Body, BMH, Dusty Orchid	1
6	8411969	Body, BMH, Oyster	1
7	8415000	Nut, BMH	1
N.S.	H685827	Face Ring, BMH, Chrome	1
N.S.	H685829	Face Ring, BMH, Bright Brass	1



BATHS

SPINNING NECK JET

NOTE: Introduced 2/99



ITEM	P/N	DESCRIPTION	QTY
1	P123XXX	Nozzle Assembly, Power Pulse Jet	1
2	7514000	Screw, Thrd Cutting, PHP #4 x .38 Lt 25	2
3	P461XXX	Fitting, Power Pulse Jet	1
4	8411XXX	Body, BMH	1
5	8415000	Nut, BMH	1
N.S.	P551827	Face Ring, Spinning Jet, Chrome	1
N.S.	P551829	Face Ring, Spinning Jet, Bright Brass	1
N.S.	P551898	Face Ring, Spinning Jet, Brushed Chrome	1

NOTE: P/N P124XXX - Spin Jet Conversion Kit-is also available which includes Items 1 and 3.

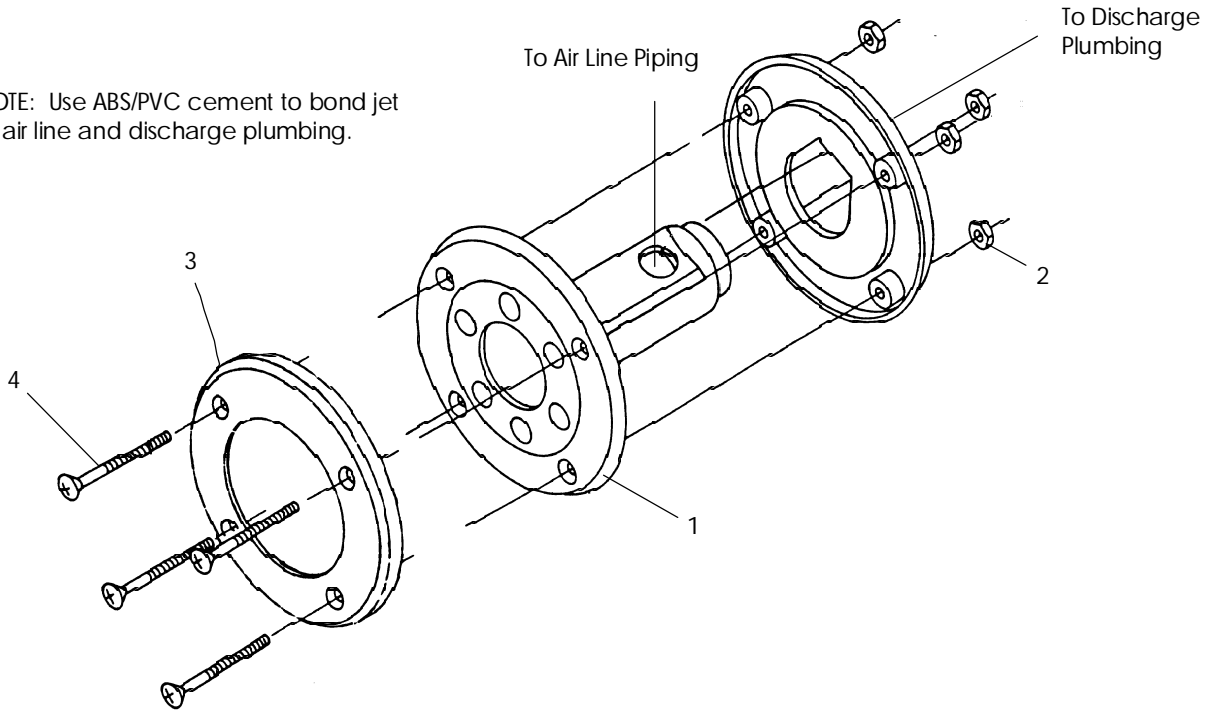


BATHS

MH JET

NOTE: No longer used-discontinued 1/86.

NOTE: Use ABS/PVC cement to bond jet to air line and discharge plumbing.



ITEM	P/N	DESCRIPTION	QTY
1	6120000	Minihead Sub-Assembly	1
2	4071000	Nut, Hex (NC) #10-24	4
3	6124828	Face Ring, Minihead, Gold	1
4	3960000	Screw, Mach., OHP, #10-24, Chrome	4
4	6125828	Screw, Mach., OHP, #10-24, Gold	4