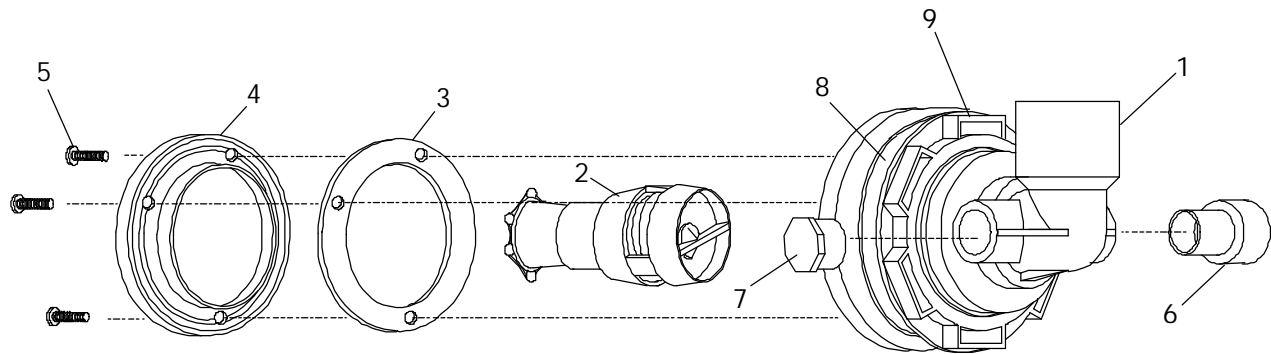




SPAS

HTC JET ASSEMBLY

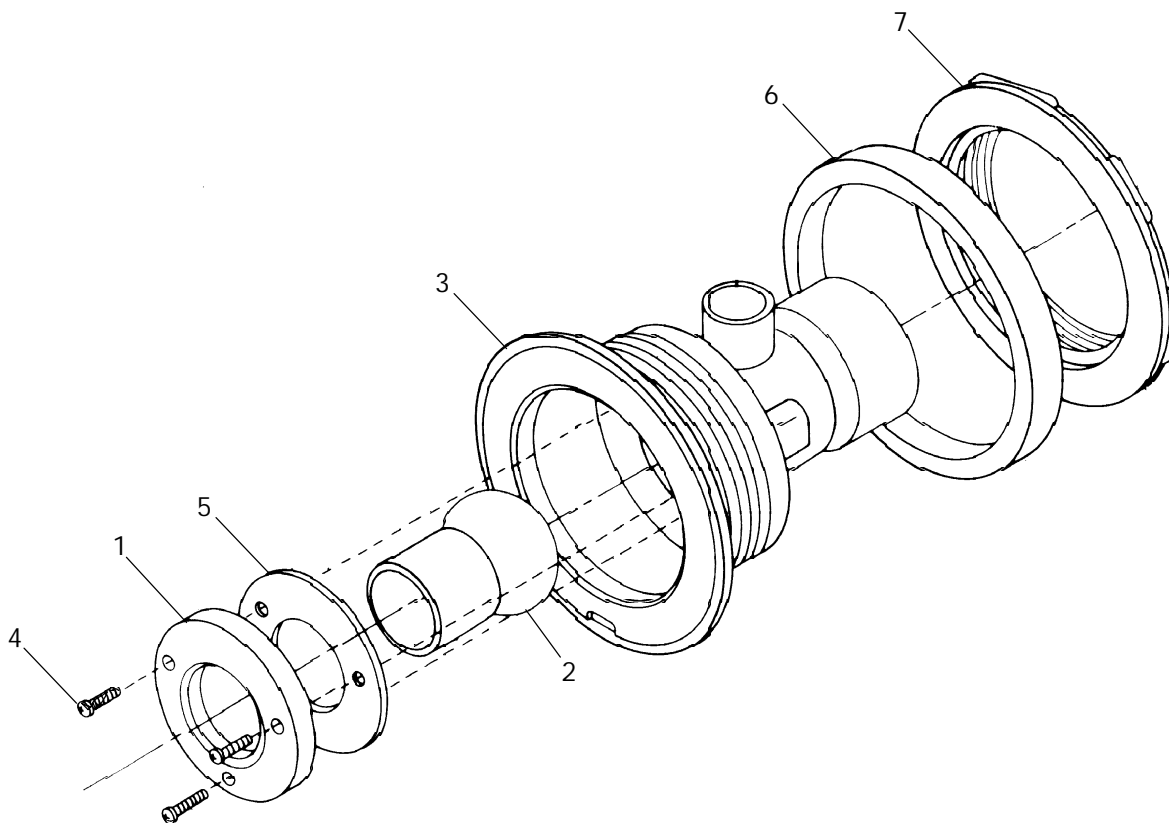


ITEM	P/N	DESCRIPTION	QTY
1	A320XXX	Body, HTC	1
2	B786XXX	Swivel Assembly, HTC	1
3	1840000	Gasket, Clamping Ring	1
4	B788XXX	Clamping Ring, HTC w/Logo	1
5	9356000	Screw, Thread Forming, PHP #6-19 x .50"L.	3
6	C279000	Adapter, 1/2" S x SPGT	1
7	B777000	Plug, 1/2" SPIG	1
8	1836000	Back Up Ring, AMH	1
9	1835000	Lock-Nut, AMH	1



SPAS

AMH JET ASSEMBLY

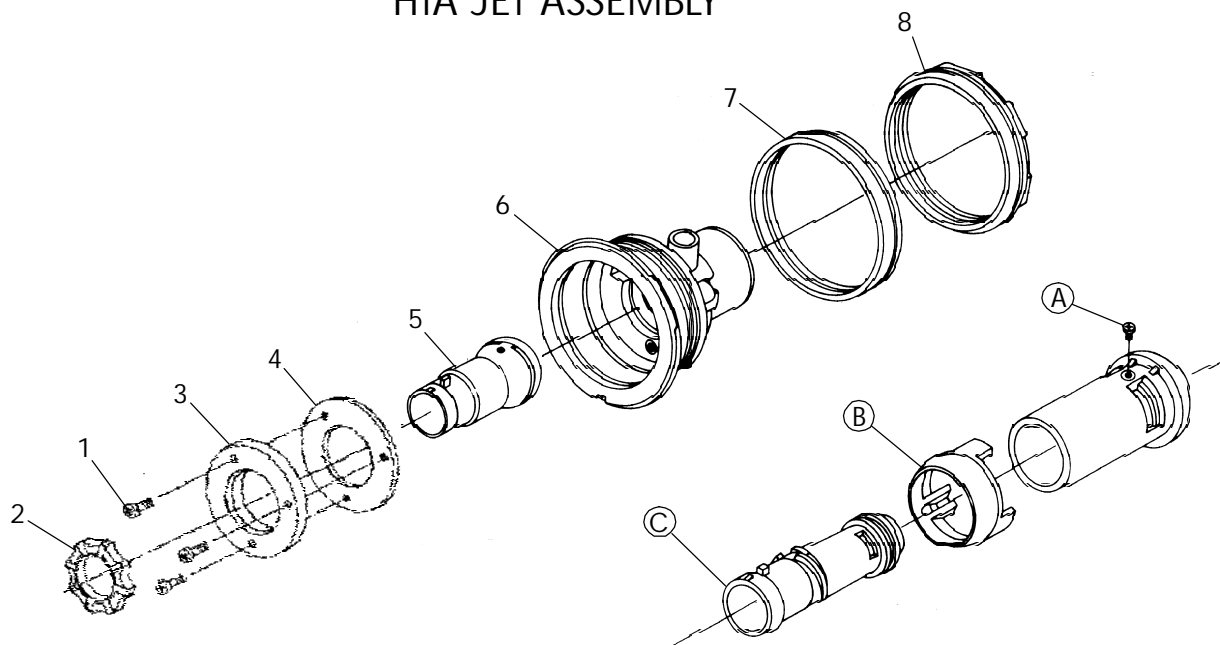


ITEM	P/N	DESCRIPTION	QTY
1	4558XXX	Ring, Clamping, AMH/Logo	1
2	1834XXX	Nozzle, AMH	1
3	1833XXX	Body, AMH	1
4	3967000	Screw, PHPM #8-32 x .50"L.	3
5	1840000	Gasket, Clamping Ring, AMH	1
6	1836000	Ring, Back-Up	1
7	1835000	Nut, AMH	1



SPAS

HTA JET ASSEMBLY



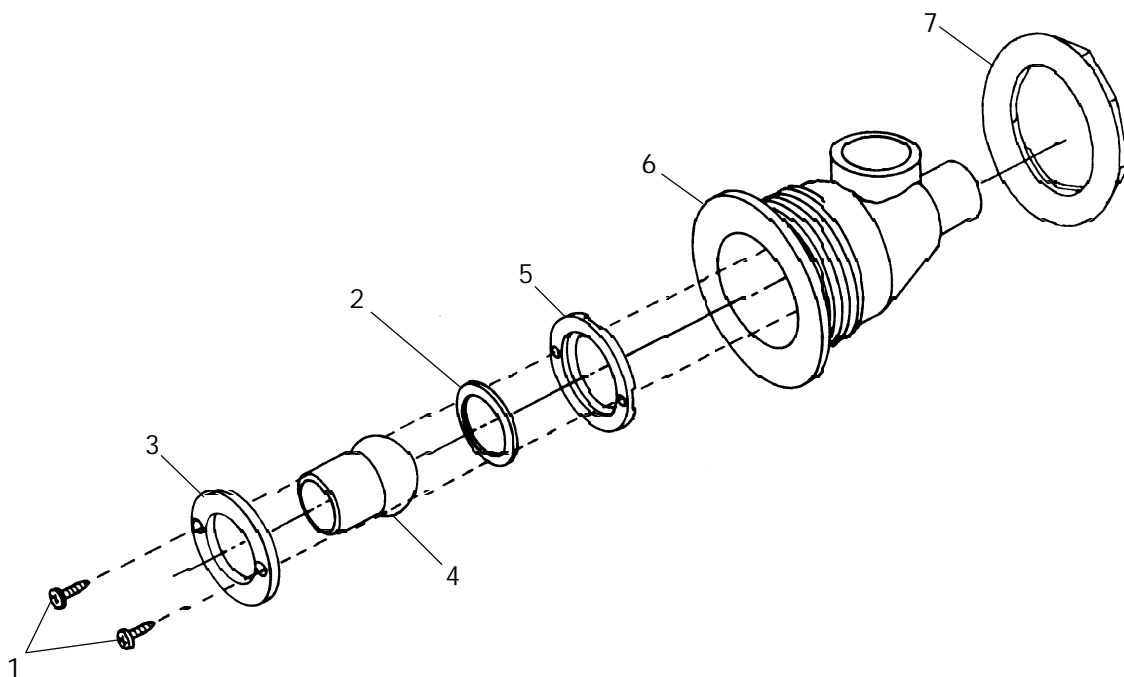
To replace the Swivel Assembly and Venturi Handle:
 Remove 3 screws securing clamping ring and gasket from jet body. Pull swivel ring B (see detail) away from swivel to expose retaining screw A. Remove screw A from swivel. Turn Venturi C counterclockwise until it is unscrewed and free from the swivel. Install new swivel assembly, securing it with clamping ring, gasket and 3 screws. Screws are properly tightened when the swivel assembly can still be manually moved from side to side, but tight enough to allow the Venturi handle to be turned to adjust water without turning the swivel. To install the handle, align the two portions of the swivel assembly with the notches on the handle and snap it on. NOTE: When installed, the handle is permanently in place; attempting to remove it will damage the snap-on feature of the handle.

ITEM	P/N	DESCRIPTION	QTY
1	3967000	Screw, PHPM, #8-32 x .50"L	3
2	7277XXX	Venturi Handle	1
3	7758XXX	Clamping Ring, HTA	1
4	1928000	Gasket, Clamping Ring, HTA	1
5	4881XXX	Swivel Assy, HTA	1
6	1644XXX	Body, HTA Jet	1
7	1925000	Back-Up Ring, HTA Inlet	1
8	1645000	Nut, HTA Inlet	1



SPAS

BMH JET ASSEMBLY



ITEM	P/N	DESCRIPTION	QTY
1	7514000	Screw, Thread Cutting, PHP #4	2
2	8488000	O-Ring, .926 I.D. x .070	1
3	8412XXX	Retainer, Nozzle-BMH	1
4	8413XXX	Nozzle, BMH	1
5	8487XXX	Internal O-Ring Seat	1
6	8411XXX	Body, BMH	1
7	8415000	Nut, BMH	1